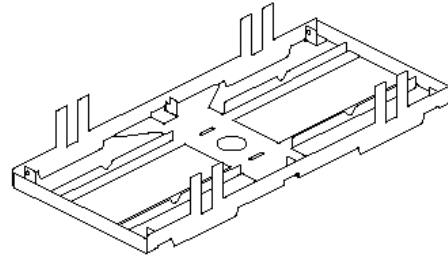
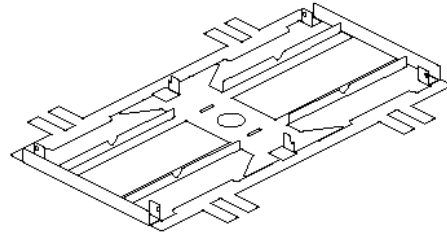


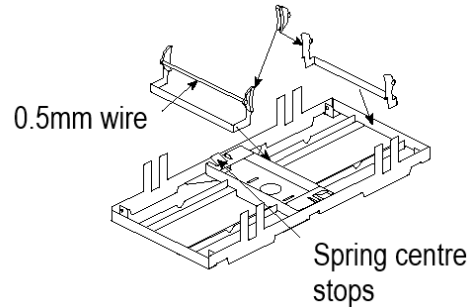
**Pair of L&YR 8' wheelbase
later pattern carriage
bogies**

**With internal springs. May be
built sprung or solid. Waisted
bearings required.**

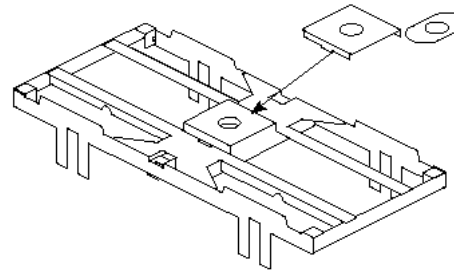
Assembly Instructions:



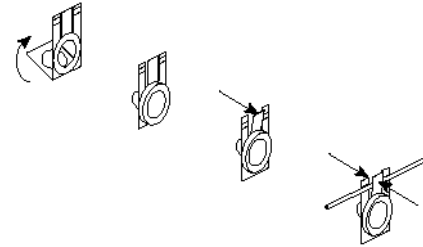
Fold the frames squarely as shown. Reinforce the fold lines with a fillet of solder. Do not fill the slots at the ends of the longitudinals as these are needed for the brake assemblies.



Fold up the brake shoe stretchers as shown. Laminate shoes either side of the stretchers, using the supplied 0.5mm wire cross shafts for alignment. Fix the shoe assemblies to the frames.



Add the pivot plate and any packing washers as shown.

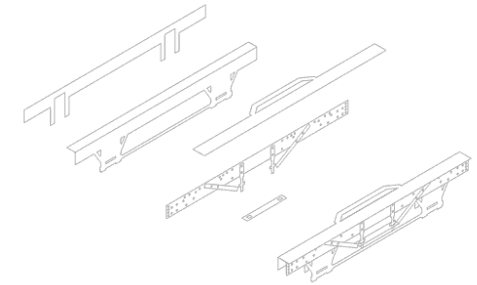


Fold up the bearing carriers as shown. Solder in the waisted bearings, then push the top tabs forward slightly. Thread two carriers onto a length of the supplied spring wire and gently squeeze the tabs with pliers to hold the carriers in place.

Thread the spring wires through the end carriers and adjust the bearing carrier positions in the guides. Add the wheels and press the spring centre stops down against the side frames to retain the springs, Trim off any excess spring wire, ensuring that sufficient wire remains so that the ends cannot fall out of their supports.

On the solebar detailing frets, punch out the half-etched rivets from the rear. Assemble them according to

the sketch, but not to the bogie frame yet:



Then attach the small bar between the queen posts. Attach the castings: outer and inner spring dampers; axle boxes; and spring plates. The spring dampers go 8mm either side of the axle: those individual castings with the square base go outboard of the axle; those on the sprue go inboard – don't remove the dampers from the sprue, but cut it into pieces and solder the resulting sprue fragment to the inside of the U-shaped solebar. The axlebox spring is just visible above the axlebox and this is represented by the flat casting placed immediately behind the solebar, with its leaf detail showing outwards and downwards. The solebar is now ready to be attached to the bogie frame. Lastly the bolster springs are placed at the centre of the bogies adjacent to the solebar. This component will be in line with the spring centre stop and will need to be filed to fit and placed last.

Secure the bogies to the carriage underframe with the 8BA fixing screws and nuts provided.

51L is part of

Wizard Models Limited
PO Box 70
BARTON upon HUMBER
DN18 5XY

Tel: 01652 635885

Email:
andrew@modelsignals.com

Shop online at:
www.wizardmodels.ltd

©Wizard Models Limited 2018

