

MT101

REPLACEMENT CHASSIS FOR THE BACHMANN LNER GROUP STANDARD TENDER

This tender type was used on classes such as the B1, J39, K1 and V2. Three pairs of 15mm 10-spoke or disc tender wheels with 2mm diameter axles are needed to complete. Provision is made for the fitting of a Bachmann coupling (not included).

The chassis should also be suitable for the equivalent Hornby tender, but the coupling and body fixing arrangements will be different.

Before removing parts from the fret drill out the chassis axle holes and the holes in the line of ten axle bearing washers with a 2.0mm drill. All fold lines should be on the inside of the bends.

Take the chassis (1) and bend down the inner frames at right angles to the top. Solder an axle bearing washer (2) to the outside of the frames over each of the front and rear axle holes, and to the inside of the frames over the centre axle holes, using the shank of a 2.0mm drill through the axle holes to ensure correct positioning when soldering. Fix pieces of the 0.7mm wire through the small holes in the chassis to form the brake supports (3), protruding to about 4mm either side. The rear one must be shaped to clear the rear fixing screw, or simply remove the centre portion once brake assembly is complete. It is easier to paint the chassis at this stage, rather than after the wheels have been fitted.

Fit the wheels to the chassis, using the spare axle washers to take up any sideplay in the front and rear wheels if necessary. If the wheels have extended or pin-point axles, the axle ends will

need to be shortened so that they are almost flush with the wheel faces before they are fitted to the chassis.

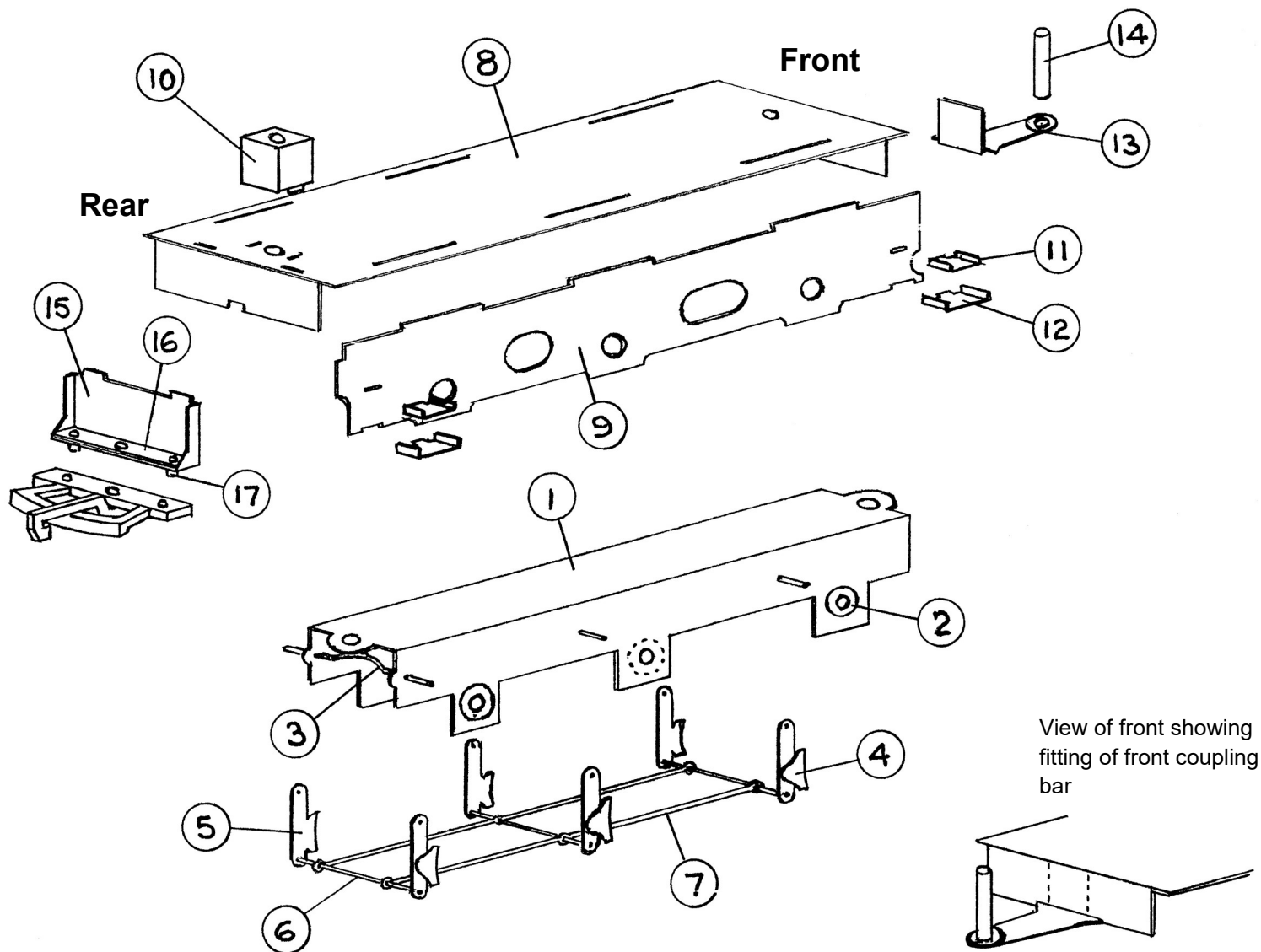
Now fit the brake blocks (4) to the hangers (5), making three left hand and three right hand, then fix the hangers to the support wires. Thread the remaining pieces of 0.7 mm wire through the lower ends of the brakes to form the tie rods (6), threading the wire through the holes in the pull rods (7) at the same time. After fixing, the ends of the wires can be trimmed as necessary.

Putting the assembled chassis to one side, take the footplate (8), bending the ends down at right angles. Slot the outer frames (9) into the footplate and fix in place. If using solder for assembly it will be found better to tack solder at the tags and at the ends, as attempting to solder along the whole length of the frames may cause distortion due to heat build up. Next fold up the rear fixing block (10) and fix it into the small slots at the rear of the footplate. Bend up the ends of the steps, and fit the short ones (11) into the upper slots in the frames, and the longer steps (12) into the recesses in the lower edges of the frames. Next bend up the end of the front coupling bar (13), fix the washer over the hole, and fix the coupling pin (14) into the hole. The assembled coupling bar can now be fitted to the back of the plate at the front of the footplate, in the recess in its lower edge (see small sketch).

If fitting a Bachmann coupling, fold up the coupling bracket (15), fix the strengthening piece (16) to it, and fix two 1/8" long pieces cut from the 1/16" diameter rod into the outer holes to form the location pins (17). The assembled bracket can now be slotted into the footplate and fixed in place. Screw the Bachmann coupling to the bracket once the tender is assembled and painted.

Now all the brass soldering is completed, add the axlebox/spring castings (18) and water scoop (19) using low-melt solder or glue.

To fix the two assembled parts of the chassis to the Bachmann tender body, drill out the two fixing holes in the body with a No.50 drill, tap the holes 8BA, and use the two 8BA screws provided (20) to screw the parts together.



PARTS LIST

1. Chassis
2. Axle bearing washers x 10
3. Brake supports x 3 (0.7mm wire)
4. Brake shoes x 6
5. Brake hangers x 6
6. Brake tie rods x 3 (0.7mm wire)
7. Brake pull rods (2)
8. Footplate
9. Outside frames x 2
10. Rear mounting block
11. Short steps x 4
12. Long steps x 4
13. Front coupling bar & washer
14. Front coupling pin (3/32" dia.)
15. Bachmann coupling bracket
16. Strengthening piece
17. Coupling location pins x 2 (1/16" dia. rod)
18. Axleboxes and springs x 6
19. Water scoop
20. 8BA screws, 1/2" & 1/4"

**Mainly Trains is part of
Wizard Models Limited**

**PO Box 70, Barton upon Humber
DN18 5XY**

**Tel 01652 635885
web www.wizardmodels.ltd,
e-mail andrew@modelsignals.com**

© Wizard Models Limited 2023